



Nifty
kitchenware

2015 COLLECTION



Nifty
kitchenware

2015 COLLECTION



Introducing Suzie Q...

Stream-lined, sparkling, and cheerful, these tools harken back to times when the kitchen was filled with beautiful gadgets you could love and rely on. Sprinkle delightful retro style throughout your kitchen with tools that make everyday tasks perfectly marvelous.

xoxo,
Suzie Q

P.S. Because Suzie's tools are specially crafted with painted wood handles, they may show a little wear and tear with time. This gives them unique charm while they maintain the durability of days gone by.

WOOD HANDLES

BRIGHT, FRESH PAINT COLORS



METAL BADGE + DETAILING



blacktop



seaside
blue



mint



vanilla
cream



apple
red



KITCHEN TOOLS

Your kitchen staples...
now with 100 times more charm

Mix and flip and scoop and whip. Suzie Q's kitchen collection starts with the fundamentals—ready to work hard and make your day sparkle.

POTATO MASHER

Mash, crush, mix, and crumble potatoes and other soft foods. Masher is weighted for perfect control and can stand alone on its flat base when not in use.

Construction: Painted wood handle, stainless steel masher

Care: Please wash by hand with soap and water

10.5" length

Card, 10 per case

■ 60454	0-30734-60454-0
■ 60452	0-30734-60452-6
■ 60455	0-30734-60455-7
■ 60453	0-30734-60453-3
■ 60456	0-30734-60456-4



* Outta sight for making mashed potatoes, *
fresh guacamole, crumbled cheeses, and more!

SPATULA

Scrape the last bits out of the pot, pan, or bowl with ease. Durable and designed for vigorous scraping, with rounded corners to prevent tearing. Silicone is heat-resistant to 600° F (315.6° C).

Construction: Painted wood handle, stainless steel body, silicone spatula

Care: Please wash by hand with soap and water

10.5" length

Card, 10 per case

■ 60534	0-30734-60534-9
■ 60532	0-30734-60532-5
■ 60535	0-30734-60535-6
■ 60533	0-30734-60533-2
■ 60536	0-30734-60536-3



* Don't flip your wig...this spatula easily *
scrapes out pots and pans and is gentle
on non-stick cookware.



KITCHEN TOOLS

METAL TURNER

When it's time to flip a burger or pancake, use the metal turner to do so with ease. The sturdy, wide turner design is perfect for getting under hard-to-flip foods!

Construction: Painted wood handle, stainless steel turner

Care: Please wash by hand with soap and water

SIZE: 12" length
Card, 10 per case

- 60469** 0-30734-60469-4
- 60467** 0-30734-60467-0
- 60470** 0-30734-60470-0
- 60468** 0-30734-60468-7
- 60471** 0-30734-60471-7



* **Simply boss for flipping eggs, burgers, crepes, pancakes, and more!** *



Go ahead, flip for this turner! Keen for flipping eggs, burgers, crepes, pancakes, and more! *



SILICONE TURNER

When it's time to flip a burger or pancake, use the silicone turner to do so with ease. Silicone is gentle on non-stick cookware and heat resistant up to 600° F (315.6° C).

Construction: Painted wood handle, stainless steel, silicone turner

Care: Please wash by hand with soap and water

SIZE: 12" length
Card, 10 per case

- 60504** 0-30734-60504-2
- 60502** 0-30734-60502-8
- 60505** 0-30734-60505-9
- 60503** 0-30734-60503-5
- 60506** 0-30734-60506-6



"Whip up some
delight!"



BALLOON WHISK

Slender wire construction and a comfortable handle allow you to whip up all sorts of concoctions with vigor and speed.

Construction: Stainless steel wire, painted wood handle

Care: Please wash by hand with soap and water

SIZE: 11" length
Card, 10 per case

- **60459** 0-30734-60459-5
- **60457** 0-30734-60457-1
- **60460** 0-30734-60460-1
- **60458** 0-30734-60458-8
- **60461** 0-30734-60461-8



You'll be on Cloud 9 whipping up marinades, gravies, sauces, scrambled eggs, vinaigrettes, whipped cream, and more!



MINI BALLOON WHISK

Thin wire construction and a comfortable handle allow you to whip up all sorts of concoctions with vigor and speed. This smaller size whisk is perfect for kids and making small portions.

Construction: Stainless steel wire, painted wood handle

Care: Please wash by hand with soap and water

7" length
Card, 10 per case

- **60464** 0-30734-60464-9
- **60462** 0-30734-60462-5
- **60465** 0-30734-60465-6
- **60463** 0-30734-60463-2
- **60466** 0-30734-60466-3



KITCHEN TOOLS



* Keen for mixing sautéed veggies, serving casserole, basting a roast, and more! *

SPOON

With ample spoon bowl size, a durable design, and a comfortable wooden handle, this spoon is a faithful kitchen staple for essential kitchen tasks and everyday use.

Construction: Painted wood handle, stainless steel body

Care: Please wash by hand with soap and water

12" length

Card, 10 per case

■ 60539	0-30734-60539-4
■ 60537	0-30734-60537-0
■ 60540	0-30734-60540-0
■ 60538	0-30734-60538-7
■ 60541	0-30734-60541-7



* Got your heels on fire to open a bottle? *
Score this tool! Travel size, durable, and easy to use. *

WOOD HANDLE BOTTLE OPENER

Open a bottle of refreshment with ease. This tool is durable, conveniently sized to take anywhere, and a piece of cake to store.

Construction: Painted wood handle and stainless steel opener

Care: Please wash by hand with soap and water

5.4" length

Card, 10 per case

■ 60544	0-30734-60544-8
■ 60542	0-30734-60542-4
■ 60545	0-30734-60545-5
■ 60543	0-30734-60543-1
■ 60546	0-30734-60546-2



ICE CREAM SPADE

Easily dig into rock-hard frozen desserts, hand-mix, level, and dole out servings in perfect amounts. Exceptional for use with ice cream, gelato, sorbet, or frozen yogurt. Lift on back of spade keeps it resting evenly and mess-free on counter when not in use.

Construction: Painted wood handle, cast metal spade

Care: Please wash by hand with soap and water

9" length

Card, 10 per case

■	60479	0-30734-60479-3
■	60477	0-30734-60477-9
■	60480	0-30734-60480-9
■	60478	0-30734-60478-6
■	60481	0-30734-60481-6

* Baby, it's unreal for scooping, serving, scraping, hand-mixing, and leveling. *



mess-free lift

METAL BOTTLE OPENER

Easily open a bottle or pierce a can of juice or sauce. This tool is conveniently sized to take anywhere, and a piece of cake to store.

Construction: Stamped stainless steel

Care: Dishwasher safe

5.1" length

Card, 10 per case

60527 0-30734-60527-1



"Open sesame!"

Got your heels on fire to open a bottle? Score this tool! Travel size, durable, and easy to use.



KITCHEN PREP

KITCHEN PREP

Get all your ducks in a row!

Before the finished dish comes the hard work and preparation. Outfit your kitchen with tools for cutting, rinsing and tenderizing. And they're so adorable... you might never want to put them away!



COLANDER

Drain and rinse liquids tidily from foods, and don't worry about your food touching the counter—the pedestal base will keep everything stable, high, and dry. Complete with a lovely enamel finish and fabulous drain hole pattern.

Construction: Stainless steel, powder coated steel

Care: Dishwasher safe

11.5" diameter, 5 qt capacity
Hang tag, 6 per case

- **60494** 0-30734-60494-6
- **60492** 0-30734-60492-2
- **60495** 0-30734-60495-3
- **60493** 0-30734-60493-9
- **60496** 0-30734-60496-0



* Get jazzed about draining veggies, fruits, pasta, potatoes, and more! *



* Razz your berries with this colander, choice for serving all kinds of berries and small foods! *

BERRY COLANDER

The colander's small size is splendid for carefully washing berries and small morsels of food. With a wide base for stability, crisp enameled color, and a fabulous drain hole pattern, it doubles as a sublime serving bowl.

Construction: Stainless steel with powder steel

Care: Dishwasher safe

7.9" diameter, 1.5 qt capacity
Hang tag, 12 per case

- **60499** 0-30734-60499-1
- **60497** 0-30734-60497-7
- **60500** 0-30734-60500-4
- **60498** 0-30734-60498-4
- **60501** 0-30734-60501-1

4-SIDED GRATER

An essential all-purpose tool, this grater has 4 grating surfaces: fine, coarse, ultra coarse, and slice. Bring flavor to a new level by adding finely grated cheeses, nuts, or citrus zest to a dish using the fine side. Use the coarse side for veggies and cheeses, the ultra coarse side for softer cheeses, and the slice side for veggies. Featuring a grippable wood handle.

Construction: Painted wood handle, stainless steel body

Care: Please wash by hand with soap and water

4" x 3" x 9.5"

Wrap, 12 per case

- **60524** 0-30734-60524-0
- **60522** 0-30734-60522-6
- **60525** 0-30734-60525-7
- **60523** 0-30734-60523-3
- **60526** 0-30734-60526-4



* *
Peachy keen for a range of grating needs! *



SMALL CUTTING BOARD

Prep, cut, serve, and present on a beautiful handled board. Includes a groove to neatly catch juices and a metal ring for hanging.

Construction: Oak board with mineral oil finish and painted handle

Care: Please wash by hand with warm soapy water. Do not leave submerged.

16.0" x 7.8" x 0.75"

Label, 6 per case

- **60489** 0-30734-60489-2
- **60487** 0-30734-60487-8
- **60490** 0-30734-60490-8
- **60488** 0-30734-60488-5
- **60491** 0-30734-60491-5

* *
All the cats who are booted use this board for kitchen prep, presentation, serving, and keeping countertops clean! *

WOOD MEAT TENDERIZER

Tenderize and flatten practically any type of meat with a smooth side for pounding chicken and veal and a textured side for tenderizing steak and chops. Even tough cuts of meat can be broken down for stewing, braising, and more effective marinating. Tenderizer is weighted for an easy swing.

Construction: Beechwood

Care: Please wash by hand with soap and water

10" length

60482 0-30734-60482-3

Card, 6 per case



* *
Hey, Bean! If you're keen on tender meat, use this on steak, veal, pork, chicken, and more! *



MEASURING



MEASURING

Precision is swell.

Success in the kitchen depends on accuracy... time and temperature must often be exact, and the tools to measure them are essential! Suzie's tools get the job done while being snazzy and adorably retro.



* If being precise gets you jazzed,
this cup set is choice! *

MEASURING CUP SET

Lack of precision can easily ruin a recipe, so make sure you get it just right with this cup set. Measurements are etched onto cups so they won't fade or rub off.

Construction: Stainless steel, painted wood handles

Care: Please wash by hand with soap and water

4 standard capacities: 1 Cup, 1/2 Cup, 1/3 Cup, and 1/4 Cup
Card, 12 per case

- **60549** 0-30734-60549-3
- **60547** 0-30734-60547-9
- **60550** 0-30734-60550-9
- **60548** 0-30734-60548-6
- **60552** 0-30734-60552-3



MEASURING SPOON SET

Lack of precision can easily ruin a recipe...so make sure you get it just right with this spoon set. Measurements are stamped onto spoons so they won't fade or rub off. Spoons nest together neatly, making storage a breeze. Glossy finish makes for easy cleaning.

Construction: Stainless steel

Care: Dishwasher safe

5 standard capacities: 1 Tbsp,
1 tsp, 1/2 tsp, 1/4 tsp, and 1/8 tsp
Card, 10 per case

60472 0-30734-60472-4



These
cool cats
nest

* If being precise gets
you jazzed, this spoon
set is choice! *



INSTANT THERMOMETER

Safety first! Make sure you cook foods to a safe temperature...with complete accuracy. Fantastic for both oven and grill use—but don't leave in while cooking! Insert into food and get a temperature reading in seconds. Wait until needle has stabilized. Then remove thermometer from food. Temperature range of 0° - 230°F (-17°C - 110°C)

Construction: Stainless steel, plastic sleeve

Care: Wipe clean with a damp cloth

1.1" diameter face
Card, 15 per case

- 60519** 0-30734-60519-6
- 60517** 0-30734-60517-2
- 60520** 0-30734-60520-2
- 60518** 0-30734-60518-9
- 60521** 0-30734-60521-9



* Baby, it's earthbound for preventing
undercooking and overcooking. *

HOURLASS TIMER

Time your eggs to cook perfectly. Before starting, make sure all sand is on one side. Then, flip timer over to begin timing. 3 minutes per turn.

Construction: Painted wood body, glass timer, protective stainless steel pillars

Care: Wipe clean with a damp cloth

4" height, 1.2" diameter
Card, 12 per case

- 60509** 0-30734-60509-7
- 60507** 0-30734-60507-3
- 60510** 0-30734-60510-3
- 60508** 0-30734-60508-0
- 60511** 0-30734-60511-0



3 minute
timer

* What's buzzin, cousin?
This timer kills it for soft boiling eggs,
quick kitchen tasks, and timing games. *



MEASURING

55 MINUTE TIMER

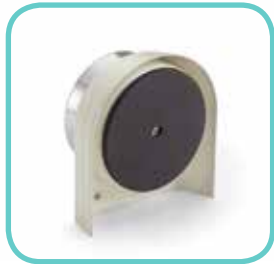
Set your timer, start cooking, and move on to other tasks while your food is timed perfectly. You'll be alerted with a resounding ring once your recipe is done. Stand it up on your counter, or use the magnetic back to stick to your refrigerator. Please note: to set timer, turn dial clockwise to 55 minute mark, then turn dial back counter-clockwise to desired time.

Construction: Enameled steel, plastic, stainless steel, magnetic back

Care: Wipe clean with a damp cloth

3.25" x 2.75" x 1.4"
Card, 12 per case

- **60514** 0-30734-60514-1
- **60512** 0-30734-60512-7
- **60515** 0-30734-60515-8
- **60513** 0-30734-60513-4
- **60516** 0-30734-60516-5



handy
magnetic
back



Don't have a cow!
* This timer will help you
cook anything to perfection. *



HANDY TIP:
Hold on to this catalog!

The 2016 Suzie Q Catalog
is coming soon. But you'll want
to keep this catalog
to order 2015 items.





WHERE'S SUZIE?

Contact us.



WEB: suzieqretro.com

EMAIL: sales@suzieqretro.com

UNITED STATES

PHONE: 1.800.372.0700 or 215.675.0700

FAX: 888.269.1339 or 215.675.4508

ADDRESS: 1907 Stout Drive
Ivyland, PA 18974

CANADA

PHONE: 1.800.383.0122 or 905.669.4145

FAX: 905.669.3846

ADDRESS: 460 Applewood Crescent, Unit 2
Vaughan, ON L4K 4Z3

GET IN ORBIT, DADDY-O!

Let's be friends.



pinterest.com/suzieqretro
instagram.com/suzieqretro
facebook.com/suzieqretro